



English version



Hagastaden

— towards a world-class Stockholm

www.stockholm.se/hagastaden





Hagastaden is to become a vibrant inner city district with 5,000 new homes and 50,000 workplaces. The area will extend the inner city and at the same time integrate Stockholm with Solna. By 2025, the area will become an entire new city neighbourhood, with a mix of housing, parks and knowledge-intensive industry. The name Hagastaden (Haga city) is derived from the unique nearby Haga Park and “stad” (city) which illustrates the merging of Stockholm and Solna.

The construction period of Hagastaden spans over 15 years and includes several large projects that will be carried out within a limited area. At the same time as the construction of the new city blocks in the City of Stockholm and the City of Solna is ongoing, work on expanding Norra Länken (the Northern link), the Stockholm City Line, the New Karolinska Solna University Hospital and the Karolinska Institute campus will be carried out. Throughout the construction period highway E4/E20 will be in use, with more than 130,000 cars using it each day.

Hagastaden in figures

Construction period: 2010-2025

Area: 96 hectares, including 30 hectares within Stockholm municipality.

Number of new homes: 5,000 total. Including 3,000 in the City of Stockholm.

Number of workplaces: 50,000. Including 14,000 in the City of Stockholm.

Investments: Overall 60 billion SEK. Stockholm City's investment amounts to 10 billion SEK.

Residential District

The residential district will have a dense and diverse urban structure with buildings that are higher than what has previously been the norm in the Stockholm cityscape. The ground floors of the buildings will be used for preschools, service establishments, restaurants and cafés to create a lively urban environment. The exterior colour scheme of the buildings will be in line with the colour scale that is characteristic of many of Stockholm's plastered facades, while the colours on the office buildings will distinguish them from the residential areas. Hagastaden will have a number of new streets and neighbourhoods all with names inspired by science and scientific research. Most of the streets are named after women pioneers in the fields of research, education and healthcare. Science is also depicted in the areas public art, which has the theme “The building blocks of life”.

Time schedule

2013

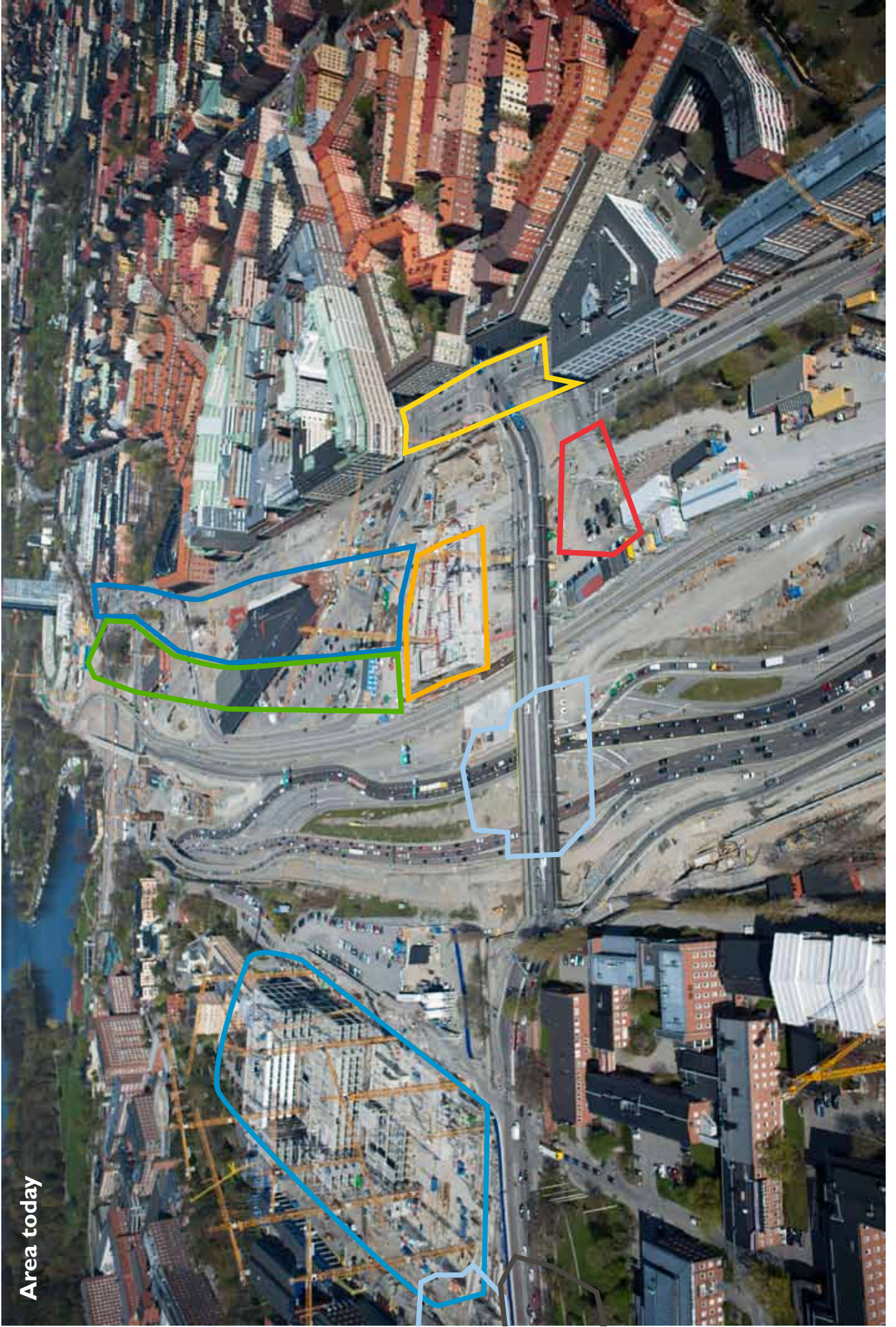
Norra Stationsgatan is completed. Commercial property for offices and retail at Torsplan completed. New Solna connection is in operation and the temporary wooden bridge is removed.

2015

Start of construction of residential neighbourhoods.

2015

Southbound tunnel for E4/E20 finished.



Area today

New Karolinska Solna,
Completed 2016

NCC – Torsplan blocks
Completed 2013

Norra Station park,
Construction starts
2020

Helix and Innovationen
blocks

Karolinska Institute
Auditorium
Completed 2012

Hagastadens first resi-
dential neighbourhood
Construction starts 2015

Buildings for businesses
within, among other
areas, Life Science.

NCC – building
Construction starts
2013

Vision Hagastaden





Illustration-Andersson Jönsson Landskapsarkitekter AB

Illustration-Andersson Jönsson Landskapsarkitekter AB

Landmark Buildings in Hagastaden

The Stockholm skyline will be enriched with two significant buildings at Torsplan. They will act as a doorway between the old and new buildings and will be landmark buildings in the city. Estimated start of construction is 2015.

Lush parks

Throughout Hagastaden runs a continuous park surrounded by the new buildings. The park is framed by rows of trees, which create a series of open terraces for cafés, recreational areas. The park's centre square has been designed as an urban park plaza with space for markets and smaller events. The Norra Station Park, which will be established in 2020, will connect Hagastaden with the Haga Park and its unique cultural heritage.

The European highway E4/E20 and Värtabanan enclosed in tunnels

A prerequisite for the building of Hagastaden is that parts of E4/E20 and the railroad line Värtabanan must be built into tunnels. The City of Stockholm, in cooperation with the Swedish Transport Administration, will enclose an approximately 800 meter long stretch of E4/E20 and Värtabanan railway track in tunnels.

For public transport, there is potential for expanding the existing subway system to Hagastaden.

Stockholm a growing city

Stockholm is a growing city. The population is estimated to exceed one million by 2024. Hagastaden is an important part of the city's progress in creating a cohesive development of homes and workplaces in strategic locations. The city's comprehensive plan "The Walking City" describes how the city will continue to develop the boundary between the inner and outer city in order to connect them.

World leader in Life Science

In and around Hagastaden there is a large concentration of scientific research and entrepreneurship within life science - an umbrella term for the sciences that aim to improve lives and health. Some of the world's leading education and research takes place at the Karolinska Institute, the Royal Institute of Technology, Stockholm University and the New Karolinska Solna University Hospital. In addition, half of the region's life science companies are located within five kilometres from Hagastaden. The ambition is for Hagastaden to become one of the world's leading areas of life sciences. You can read more at www.hagastaden.se.

Innovation and Development

The initiative for the development of Hagastaden comes from the City of Stockholm, the City of Solna, New Karolinska University Hospital, Karolinska Institute, Akademiska Hus, Locum, Trafikverket (The Swedish Transport Administration), Stockholm Science City Foundation and a number of private developers. The common vision is: Hagastaden - a scientific world-class city with a focus on health, where workplaces, research and housing meet culture and recreation.

2017

Construction of tunnel enclosing the railway tracks starts. North-bound tunnel for E4/E20 finished.

2019

Railway tunnel becomes operational. Värtabanan's temporary tracks are removed.

2020

Construction of Hagastaden's park, Norra Stationsparken, begins.

2025

Hagastaden completed.

Contact:

Gunilla Wesström
Chief Project Manager
Stockholm City Development Administration
Phone: +46 (0)8-508 263 83
E-mail: gunilla.wesstrom@stockholm.se

Andreas Liljefors
Public Relations Officer
Stockholm City Development Administration
Phone: +46(0)8-508 264 22
E-mail: andreas.liljefors@extern.stockholm.se



www.stockholm.se/hagastaden
www.hagastaden.se