

Ostberga Gröndal Västberga Farsta Strand Stureby Enskededalen Fruängen Hökarängen  
Bagarmossen Värberg Gubbängen Sockenplan Västertorp Högdalen Älvsjö Sköndal  
ben Årsta Sandsborg Mälardalens Skarpnäcks Gärd Johanneshov Enskedefältet Sättra  
Blåsut Axelsberg Långsjö Tallkrogen Örby Långbro Fagersjö Midsommarkransen Bredäng  
Farsta Vårby Gärd Liseberg Kärrtorp Bredäng Farstanäset Hammarbyhöjden Östberga  
karängen Aspudden Örby Slott Skärmarbrink Enskede Gärd Skärholmen Bagarmossen  
del Örby Långbro Fagersjö Midsommarkransen Bandhagen Skogskyrkogården Larsboda Hammarbyhöjden



# SÖDERORT 2030

A FUTURE VISION BECOMES REALITY

Skarpnäcks Gård Högdalen Älvsjö Sköndal Orhem Örnberg Liljeholmen Skrubba Häger  
Gård Johanneshov Enskedefältet Sättra Rågsved Björkhagen Solberga Svedmyra Gärd  
bro Fagersjö Midsommarkransen Bandhagen Skogskyrkogården Larsboda Hammarbyhöjden  
stanäset Flaten Hagsätra Östberga Gröndal Västberga Farsta Strand Stureby Enskede Gärd  
skede Gärd Skärholmen Bagarmossen Värberg Gubbängen Sockenplan Västertorp  
Hägersten Hägerstensåsen Globen Årsta Sandsborg Mälardalens Skarpnäcks Gärd  
ra Gamla Enskede Telefonplan Blåsut Axelsberg Långsjö Tallkrogen Örby Långbro  
Hammarbyhöjden Herrängen Farsta Vårby Gärd Liseberg Kärrtorp Bredäng Farsta  
reby Enskededalen Fruängen Hökarängen Aspudden Örby Slott Skärmarbrink Enskede  
Västertorp Högdalen Älvsjö Sköndal Orhem Örnberg Liljeholmen Skrubba Hägersten  
Gård Johanneshov Enskedefältet Sättra Rågsved Björkhagen Solberga Svedmyra Gärd  
bro Fagersjö Midsommarkransen Bandhagen Skogskyrkogården Larsboda Hammarbyhöjden



**For further information about Söderort 2030, please contact:**

Jesper Ackinger, Project Manager and Lotta Vidén, Assistant Project Manager

Söderort Vision, City Hall, Ragnar Östbergs Plan 1, SE-105 35 Stockholm

Phone +46 (0)8-508 29 000 [soderort@stockholm.se](mailto:soderort@stockholm.se) [www.stockholm.se/international](http://www.stockholm.se/international)

# Söderort 2030 – a future vision for everyone

Agnes and David are two of the future 375,000 residents of Söderort – southern Stockholm – in 2030. Both they and everyone else who will live and work in Söderort in the future must have access to good, varied housing, workplaces and services. They must also be close to the very strength of Söderort, i.e. nature, cultural experiences and a deversified urban environment. Söderort's great diversity is something that must be both developed and managed with care.

To achieve this, everyone must work in the same direction. This is partly why the City Council has adopted the vision for Söderort 2030, which highlights more workplaces and better public transport cross links as two of the most important focus areas that need to be improved to increase the attractiveness of the whole area.

In this brochure you can read more about the vision, and about the tangible proposals for

improvement which the City, along with other stakeholders, now needs to implement. I hope you will also play your part in implementing Söderort 2030 – a future vision for everyone.

**JOAKIM LARSSON (MODERATE PARTY)  
VICE MAYOR FOR URBAN DEVELOPMENT**

PHOTO: PETER KNUTSON



A handwritten signature in black ink, which appears to read 'Joakim Larsson', written in a cursive style.

# VISION FOR SÖD

**The City Council has adopted a vision for Söderort 2030. It is based on the city's vision of 'A world-class Stockholm'. The vision presents a desired future for the southern parts of the city, an area which is world-class in the same way as the rest of the city. The vision takes its point of departure from the people living in Söderort.**

## **Söderort for citizens**

Needless to say, the citizens are the focus of everything that happens in Söderort. In a Söderort for citizens, everyone is safe. The environments are well maintained and well lit. Safety and accessibility are good. Citizens are involved in and take joint responsibility for the local area and the city. The forms for participation and democracy have developed, both through modern media and conventional meetings and discussions with citizens. The turnout for elections is high. New forms for direct influence and decision-making are being successfully applied.

Publicly funded service is of the highest quality. Freedom of choice is well developed, and the citizens of Söderort have good opportunities to influence the offered services. Elderly care is characterised by personal influence, safety, respect and opportunities for a meaningful life. The schools maintain a very standard of quality and attract pupils from the whole Stockholm area.

There is a wide range of housing of varying sizes and standards, with different buying and renting solutions. New homes are built to be energy efficient and are also adapted to the environment in other ways. The housing is mixed and is close to workplaces.

Stockholm is a close-knit city. Different parts of the city and of Söderort are well connected. Söderort's green areas and water have been made

accessible to citizens and visitors alike. The environment is clean, pleasant and attractive.

There is a well-developed transport system with minimal impact on the climate, which enables people to move throughout the entire region and to important communication hubs quickly and easily. The cross links have been improved. The Spårväg Syd tramway serving Älvsjö-Skärholmen-Flemingsberg is now complete. The metro system has been extended from Hagsätra to Älvsjö, and an extension of the system from Älvsjö to Liljeholmen is planned. The commuter train station in Fagersjö has been re-opened. Work to extend the cross link tramway from Älvsjö via Högdalen and Hökarängen to Skarpnäck is in full progress. Decking of Nynäsvägen road in the Johanneshov area has been carried out.

## **Innovative and growing**

Söderort, the southern part of Stockholm, is a strong force in the growing Stockholm-Mälaren region. Close proximity to central Stockholm, the university and research centres at Södertörn, in Kista and in the Norra Station area are of great importance to the development. The design centre at Telefonplan and the Royal Swedish Academy of Fine Arts have helped make Söderort a forerunner in the development of creative industries. Links between Telefonplan and Stockholm International Fairs in Älvsjö have been strengthened, and together they form a cluster for companies in design and other creative sectors. Other

# DERORT



## **AGNES, AGED 26 IN 2030.**

### **How do you get around in Stockholm?**

By metro and boat.

### **Which part of Stockholm do you live in?**

Örnsberg. Close to the café and animal park.

### **What happens if you fall ill?**

I press a button on my computer.  
Two if I'm very ill.

### **Do you have any children?**

Yes, Moa, Johanna, Johan, Ulla and a pet rabbit.

clusters for clean technology and finance are being developed, and partnerships are in place with both Flemingsberg and the Norra Station area regarding Life Sciences.

There are many opportunities for cultural experiences. Each district has its own distinctive character and profile. Collaboration with Botkyrka municipality in particular has resulted in the experience zone along the metro's red line becoming well known.

The schools in Söderort enjoy well-developed associations with colleges, universities and the private sector. Collaboration between the business community and the academic world also means that research results can be applied directly in various types of enterprise. This has been particularly successful in the fields of environmental and energy technology.

The schools in Söderort maintain a very high standard of quality and attract pupils from many different areas. No one leaves compulsory school without basic knowledge.

Söderort is also a venue for many international meetings. Places like the Globe Arena, Stockholm International Fairs and Telefonplan, as well as Flemingsberg just south of Söderort, attract scientists, business people and others from all over the world. The multicultural population of Söderort supports international exchanges and lays a better foundation for international relations.

Faster, eco-friendly rail services have brought Europe closer, as well as Skavsta and Arlanda airports. Developments in Söderort are taking place in tandem with developments in Södertörn and in close collaboration with these municipalities.

The strong development is combined with far-reaching environmental thinking. In many respects, Söderort is the first to try out new solutions. The sustainable society is fast becoming a reality. The goal of being fossil fuel free is on the way to being met.

## Multi-faceted and rich in experiences

Citizens of Söderort have unique opportunities for work and education. The boundaries between districts and municipalities have become less significant. The historical division between different types of housing area and between residential and commercial districts has been broken down. This means that opportunities for working, using services and taking part in experiences can be accessed both locally and also, thanks to good communications, far from home.

Söderort is a very attractive area for business establishment. New enterprise is at a high level. In the outer parts of Söderort, areas such as Farsta, Högdalen, Sättra, Skarpnäck and Fruängen have been developed with new workplaces. In the Kungens kurva/Skärholmen area, an exciting new city environment has emerged, featuring a great many new workplaces. Meanwhile the area has also consolidated its position as Northern Europe's largest commercial area. Farsta has grown into a strong hub in the new south-east part of Stockholm. The area has an attractive shopping centre, and Farsta has a clear link with sports and outdoor pursuits.

The inner part of Söderort has merged into central Stockholm, reducing the difference between the central and outer parts of the city. Areas such as Liljeholmen, Telefonplan, Årsta and Johanneshov have experienced very strong development. The vision for Söderstaden is becoming a reality. There has also been strong development around Älvsjö centre and development in the area around Stockholmsmässan is having knock-on effects.

Söderort is a place for experiences. Facilities such as the Globe Arena, the new arena, Stockholmsmässan and the design centre at Telefonplan attract millions of visitors. Many local centres have been developed with a range of shopping, cafés, restaurants, meeting-places and culture. But the attraction is also based on the good environment and close proximity to nature and water. ■



**DAVID, AGED 29 IN 2030.**

**What's the best thing about Stockholm?**

That it's not just skyscrapers, it's more like summer cottages.

**What's the worst thing about Stockholm?**

There's too much bad lemonade.

**What do you do in you spare time?**

Play PlayStation 100. Sometimes I drive a train or aeroplane.

**Why do tourists want to come here?**

To say hello to Grandma. And to go to the bat museum.

# HOW TO ACHIEVE

**In order to reach the vision, the City Council has approved a strategy for how work to develop Söderort should proceed. To supplement the vision there is an action plan which describes tasks and divisions of responsibility in more detail. Below is a summary of the strategy and the action plan.**

Two main goals are highlighted in the strategy. The first is to create better cross links within Söderort. The Spårväg Syd tramway project (Älvsjö-Fruängen-Skärholmen-Kungens kurva-Flemingsberg) is a good example of this. Surveys and discussions clearly indicate that improved public transport cross links are of great importance to the citizens of Söderort. The second main goal is to create more workplaces in Söderort. In recent years the number of homes in the area has increased, but the number of workplaces has not increased proportionally. The City aims to reverse this trend and attract more workplaces to Söderort. This reduces the need for long commutes, improves the environment and lays the foundation for a better quality of life.

Opportunities for attracting new workplaces are connected, among other things, to the development of public transport cross links.

From a more local perspective it is important to promote development in all parts of Söderort. Circumstances vary. The socio-economic differences between the districts have increased to some extent, even though most can report positive development. Local developments involve, for example, increasing participation among residents, strengthening networks, increasing safety, improving the outdoor environment, improving service in and around local centres, local culture and more meeting-places. Upgrading municipal housing is also part of the local

perspective. Here the City is investing extensive resources both to achieve a general improvement in living environments, but also to reduce energy consumption and increase safety.

Obviously, public services must be of high quality. The goals for publicly funded services in the whole of Stockholm also apply in Söderort. The same applies to the City's ambitious goals for eco-friendly sustainable development.

## **GOAL AREAS**

The strategy and action plan describe a number of goal areas. Here are some examples of improvement initiatives:

### **Improved public transport cross links**

Opportunities for moving between Söderort's districts must be improved. This applies to public transport cross links, but there is also scope for improvement for cyclists, pedestrians and motorists.

Some of the areas the City wants to work with are:

- Spårväg Syd tramway.
- Improved main line bus service network.
- Pilot study on the Hagsätra-Älvsjö-Liljeholmen-Fridhemsplan route.
- Extended metro system Hagsätra-Älvsjö.
- Pilot study on the Älvsjö-Högdalen-Skarpnäck-Norra Sköndal route.
- Commuter train station in Fagersjö.



# VE OUR VISION

- Improved public transport to Östberga

## More workplaces

Creating more workplaces is a high priority. This entails creating space for new workplaces in new industries, and also enabling the development of existing workplace areas, service companies and skills.

More jobs are needed in Söderort in both the private and public sector. Stockholm wants to collaborate with the municipalities in Södertörn for mutual development. The crucial issue is not which municipality the workplace is in, but that a better balance is struck in the region. In order to create more workplaces, the City aims to:

- Improve public transport and access to and from the region's major airports.
- Strengthen collaboration with trade and industry.

- Collaborate with the Södertörn municipalities.
- Develop Telefonplan as a centre for creative industries.
- Develop the area around Stockholm International Fairs.
- Develop existing workplace areas such as Larsboda in Farsta and Skrubba in Skarpnäck.
- Continue to develop the area around Kungens kurva/Skärholmen
- Lay the foundation for new clusters to form in fields such as environmental and energy technology.

## Local development

The vision for Söderort can be regarded as a framework for the local development that must occur in the various districts of Söderort. The circumstances of the districts may vary greatly, but they share the same goal of creating safe, attractive city districts. In 2010 the initiative was

PHOTO: JENS JOHANSSON (THIS IMAGE HAS BEEN MODIFIED)



taken to start special development work in Rågsved. Local development in Söderort includes:

- Working with local clubs and societies and supporting those that develop local safety and youth projects.
- Developing local dialogues with citizens.
- Improving cleaning, lighting and maintenance of the external environment.
- Looking into how the local centres can be developed.
- Collaborating with local property owners.
- Highlighting profiles for different districts, such as sport for Farsta.
- Laying the foundation for more local culture and meeting-places.
- Continuing to equip municipal housing in accordance with the housing companies' plans.

### Developing the municipal infrastructure

Future investments will be needed to develop the municipal infrastructure. This may involve paving the way for construction of workplaces and housing, or creating new public transport connections. It may also entail developing and improving access to nature experiences. The overall development plan also shows that it is important to link local hubs together, which requires investments in infrastructure. Some of the areas the City wants to begin developing are:

- The Rågsved-Högdalen-Fagersjö-Farsta zone.
- Söderstaden and the new Stockholm Arena.
- Homes and workplaces along Skärholmsvägen.
- Årstafältet.
- Skärholmen-Kungens kurva.

### Parks and green areas

Part of what makes Söderort so attractive is all the fine lakes and nature areas. Even though construction will continue in Söderort, valuable green areas will be preserved and developed. One goal is to enable more people to enjoy both the green areas and the beautiful lakes. Some of the measures the City wants to take are:

- Creating fine walking paths, improving signage etc. to make the natural areas more accessible to everyone.
- Improving bathing spots, including in Sättra and the lake Flaten area.

- Developing the area around lake Flaten.
- Cleaning the water at lake Magelungen.

### More homes

Stockholm will continue to grow and its population will increase. According to Vision 2030, 'A world-class Stockholm', the population is estimated to be around one million in 2030. This is an increase of approximately 20% on the current population. Presumably, Söderort will generally follow the same trend. The number of new homes built depends to some extent on how many new workplaces are created. In order to create more workplaces the City aims, for example, to:

- Concentrate on 'gaps' between developed areas which are currently poorly utilised and are not recreational assets.
- Create a 'walking city' on Årstafältet with homes and workplaces.
- Create more, affordable housing for young people.
- Create homes of varying sizes in attractive locations.
- Build housing in accordance with prevailing plans in, for example, Aspudden/Hägersten, Farsta, Fruängen, Högdalen, Liljeholmen, Sättra, Årstastråket and Älvsjö.

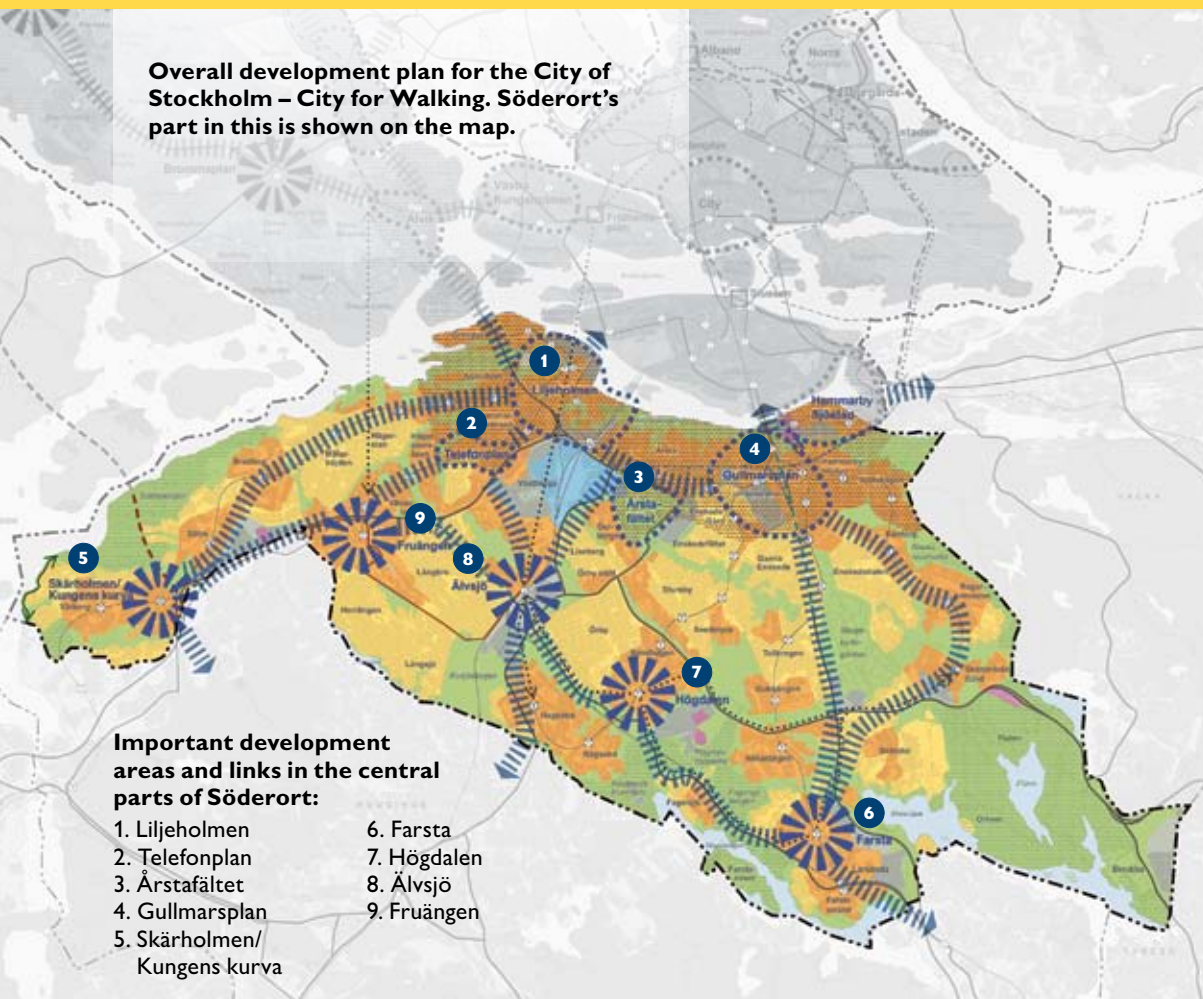
### Culture, leisure and sport

Söderort boasts an active sporting and outdoor scene. This will continue to be developed. The local culture scene is exciting and innovative. There is great potential for development here. In spring 2010, the city theatre in Skärholmen began an extensive new children's and young people's theatre operation in Skärholmen.

Some of the measures the City wants to take are:

- Maintaining and developing jogging tracks.
- Developing the Högdalstopparna recreational area.
- Creating an international-standard skate park in Högdalen.
- Developing and renewing a number of sports centres.
- Laying artificial turf at several pitches and sports venues.
- Developing new metro station libraries like those in Högdalen and Bredäng.

**Overall development plan for the City of Stockholm – City for Walking. Söderort's part in this is shown on the map.**



**Important development areas and links in the central parts of Söderort:**

- |                                 |             |
|---------------------------------|-------------|
| 1. Liljeholmen                  | 6. Farsta   |
| 2. Telefonplan                  | 7. Högdalen |
| 3. Årstafältet                  | 8. Älvsjö   |
| 4. Gullmarsplan                 | 9. Fruängen |
| 5. Skärholmen/<br>Kungens kurva |             |

**Söderort and Södertörn**

Many investments and initiatives are needed to continue the positive development of Söderort. There are a lot of good things already. The City considers it important to provide better information and to market Söderort in the future. Attractive visitor destinations, such as Stockholm International Fairs, the Globe Arena and Telefonplan, combined with appealing housing areas, attractive commercial sites, access to nature areas and public transportation make Söderort highly attractive. This needs to be highlighted more in the City's and its business partners' information about Söderort.

To strengthen Söderort's future development, networks within the city, between districts and also between the City and collaborating parties need to be strengthened further. Continued collaboration with the Södertörn municipalities is also important. This applies both to the Södertörn municipalities as a group, and to individual municipalities on various development projects. ■



## Söderort in the future

The vision is now becoming reality. The City Council has adopted a vision for Söderort 2030. It is based on the City of Stockholm's vision of 'A world-class Stockholm'. The southern parts of the city, Söderort, will be world class in the future, as will the other parts of Stockholm.

The vision aims to develop Söderort for those who live and work here by improving and developing safety, education opportunities, trade and industry, the labour market, infrastructure and city planning.

This brochure contains more information about what the programme for Söderort entails. The vision text is presented in full with a vivid description of what Söderort will be like in 2030. You can also read a summary of the strategy for implementing the vision along with a summary of an action plan for developing Söderort. Exciting reading for anyone interested in the development of and challenges in Söderort, the southern parts of Stockholm.

Further material about Söderort 2030 is available at [www.stockholm.se/international](http://www.stockholm.se/international)



CITY EXECUTIVE OFFICE  
City Hall, SE-105 35 Stockholm  
Phone +46 (0)8-508 29 000  
[www.stockholm.se/soderort](http://www.stockholm.se/soderort)